

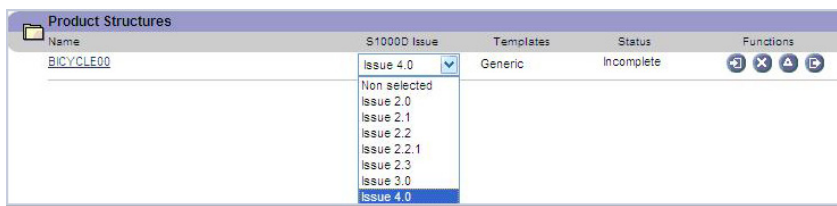
S1000D impact[™] v4.0

Feature Enhancements



Delivers Specification Issue 4.0 Schema Support, Enhances Ease of Use

S1000Dimpact is a powerful change management solution ensuring that modifications in engineering data are tracked and implemented by technical publication departments. The software synchronizes and links S1000D[™] and Logistic Support Analysis Record (LSAR) data. The latest release provides support for Issue 3.0 and 4.0 schemas. In addition, **Impact** includes new ease of use features, including; new project configuration options, ability to separately assign CB subtasks, Illustrated Parts Data (IPD) Data Modules (DMs) creation and mapping of descriptive modules. This document highlights, illustrates and briefly describes those additions and changes.



Specification Issue 3.0 & 4.0 Support

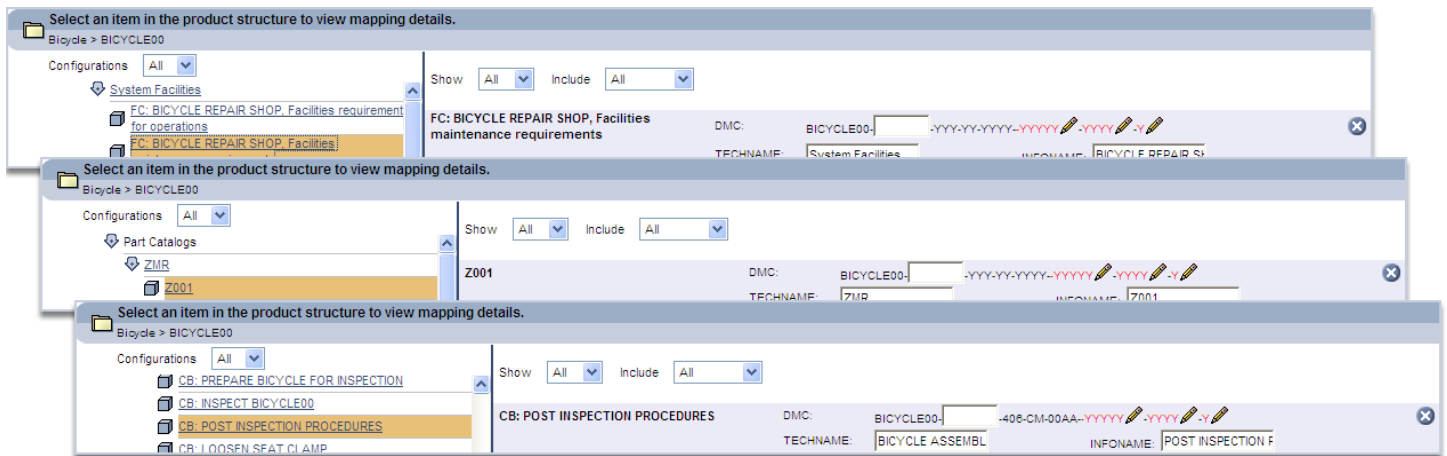
S1000Dinteract supports both Issue 3.0 and 4.0 of the Specification including support for the following DMs or document types; Descriptive, Illustrated Parts Data (IPD) and Procedural.

New Versioning Options in Project Configuration

A new option in the project configuration screen facilitates easy selection and setup of the export version by project.

Ability to Create New Types of Modules

- **CB Subtasks** - Users now have the option to separately assign their own Data Module Codes (DMCs) for CB subtasks, supporting more detailed and granular information.
- **IPD Data Modules** - Users can now easily create IPD DMs from LSA data.
- **Descriptive Modules** - Users can now map additional LSAR narrative tables to descriptive modules, as required. Tables that are included in the mapping can be configured, enabling users to only focus on relevant information.



When creating new modules the document type will be indicated by different abbreviations.

This document is for information purposes only and is subject to change without notice. Content is current as of January 2010. Inmedius disclaims all warranties of any kind either expressed or implied.

Inmedius and the Inmedius logo are registered trademarks, and the Inmedius S1000D Publishing Suite and Inmedius S1000Dimpact are trademarks of Inmedius, Inc. ASD S1000D and S1000D are trademarks of the Aerospace and Defence Industries Association of Europe. All other company names, products, and trademarks are the property of their respective holders. Companies mentioned do not imply endorsement.

Inmedius S1000Dinteract highlights Sheet © Copyright 2010. Inmedius, Inc. All rights Reserved.