

# S1000D manager™ v3.1

## Feature Enhancements



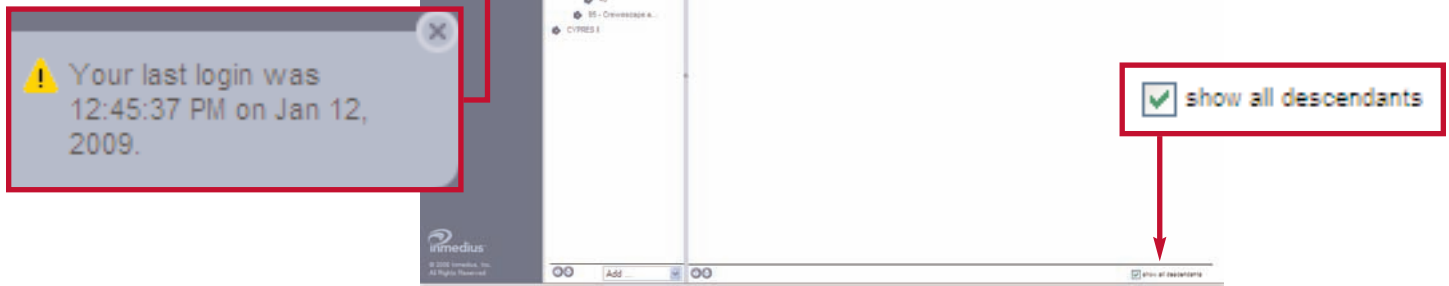
### Enhanced User Interface, Ease of Use and System Performance

**S1000Dmanager** is a true management system that distinguishes itself by a strong business process driven approach that is easy to use, and integrates authoring through publishing. **Manager v3.1** is a maintenance release that includes several new features. These include; redesigned screen layouts, an extended Inbox, and the ability to easily copy or clone complete projects. The software update includes items and other enhancements requested by our valued clients. This document highlights, illustrates and briefly describes those additions and changes included in the January 2009 release.

### New Screen Layout Expands Useable Work Space

The Graphical User Interface (GUI) has been redesigned to accommodate and display more information in a single screen view, improving ease of use and system efficiency. Subtle changes, with better use of space, enhances the readability at various screen resolutions and expands the work area. For instance, less scrolling is now necessary when working on a laptop. The Library interface now provides a "show all descendants" option that lists all documents within folders and subfolders, without having to navigate the entire Library structure.

The improved screen layout includes relocating the notification area and "Sign Out" to the left-hand sidebar.



### Data Module Details Included in Extended Inbox

The Inbox now displays more Data Module (DM) details and standard views, including; Data Module Code (DMC), language, version and Quality Assurance (QA) status. An additional line of metadata in the extended Inbox details more information concerning the S1000D™ document.

Inbox (10) Manage (157)						Showing 1-10 of 10
10 Assigned (8 Unread) / 0 Available (0 Unread)						
Name	Summary	Sent By	Date	Process	Role	Functions
Air Vehicle		M. Tuttle	Today 12:51 PM	S1000D SNS	SNS Manager	
<a href="#">CYPRES (1) - Controls and indicators (en)</a> Filename: DMC-CYPRES-A-95-41-00-00A-111A-A		M. Tuttle	Today 1:24 PM	S1000D DM	Author	
<a href="#">CYPRES (1) - Description of function (en)</a> Filename: DMC-CYPRES-A-95-41-00-00A-042A-A		M. Tuttle	Today 1:24 PM	S1000D DM	Author	

## Project Cloning

With **Manager v3.1** its easy to clone or copy projects. A significant timesaver, this new feature is best used for templating or to start a new project. Simply open an existing project, rename it, and assign a new Model Identification Code. The new project will contain all modules from the source project and the copied modules will be identified with the new Model Identifier.

**S1000Dmanager™**

Library  
Inbox  
Dashboard  
Settings  
Sign Out

Your last login was 12:32:04 PM on Jan 13, 2009.

**Copy Project**  
Copies a project based on the existing project selected

**File Management**  
Choose modelics and assign new identifiers

Existing Project: Cybernetic Parachute Release System      New Project:

Existing Modelic	Existing Modelic Title	New Modelic	New Modelic Title
<input checked="" type="checkbox"/> CYPRES	Cybernetic Parachute Release System	<input type="text" value="NEWCYPRES"/>	<input type="text" value="New CYPRES"/>

**inmedius**  
© 2008 Inmedius, Inc  
All Rights Reserved.

## Other Enhancements

- New option allows users to set an SGML project to use four-digit sections
- User IDs can include periods, dashes and underscores
- Document counts in the Library are disabled by default, improving display performance
- Publication Module (PM) number can be alphanumeric
- QA Comments Tab has mandatory fields and new layout
- Standard Numbering System (SNS) documents can be sent through a Workflow into the Archive
- The Information Code Number (ICN) sequential number can be unique per modelic/ originator/ seqnum combination and enforced
- Ability to publish to Inmedius S1000Dinteract™ on Linux Operating System

*This document is for information purposes only and is subject to change without notice. Content is current as of January, 2009. Inmedius disclaims all warranties of any kind, either expressed or implied.*

*Inmedius and the Inmedius logo are registered trademarks, and the Inmedius S1000D Publishing Suite, Inmedius S1000Dmanager and Inmedius S1000Dinteract are trademarks of Inmedius, Inc. ASD S1000D and S1000D are trademarks of the Aerospace and Defence Industries Association of Europe. All other company names, products, and trademarks are the property of their respective holders. Companies mentioned do not imply endorsement.*

*Inmedius S1000Dmanager Highlights Sheet © Copyright 2009. Inmedius, Inc. All rights reserved.*