

inmedius[®] S1000D impact[™]

Synchronize, Link LSAR Data and S1000D Technical Documentation

The current practice for linking technical documentation to Logistic Support Analysis Record (LSAR) data usually involves sharing raw information and paper back and forth between engineering and publication authors, which is error prone and inefficient. With **Impact's** flexible exchange capabilities, organizations can significantly improve their performance and reduce errors in this important business process, and are no longer locked into vendor-specific applications. **Impact** provides a balanced approach to data integration, facilitating both control and flexibility. By synchronizing LSAR and S1000D data sources, **Impact** allows each system to work independently, but in concert with one another, eliminating duplication of effort in creating information and managing changes. The seamless change management solution ensures that changes in engineering data are tracked and implemented by technical publication departments, so that documentation is up-to-date, accurate and produced in a timely manner. Information from various sources – LSAR data, technical publications, product data models, engineering drawings – can be maintained, tracked and acted upon. **Impact** also provides robust workflow capabilities, audit trails and reporting functions to maintain controls and manage changes.

The Missing Link Between LSAR and S1000D Data



Reach Unprecedented Levels of Performance and Efficiency

Impact and the integrated Inmedius S1000D Publishing Suite[™] is a complete, end-to-end solution to successfully manage the technical documentation publication process. The Commercial Off-The-Shelf software is easy to use, implement and maintain. Breakthrough features are changing the landscape of technical publishing, making every facet of your S1000D implementation possible. Only with an integrated solution can rules established by project managers be so effectively and automatically carried out from start-up through authoring to final delivery.

Browser-based **Impact** works seamlessly with **S1000Dmanager[™]**, facilitating a direct link between LSAR data and the S1000D CSDB to review and manage engineering changes. **Impact** is compatible with MIL-STD-1388-2B, MIL-PRF-49506 and DEF STAN 00-60, the standards that describe LSAR data in logistics support software from industry leaders like Integrated Support Systems, Inc. (ISS) SLICwave[™] and others, including Raytheon[®] Enhanced Automated Graphical Automated Graphical Logistics Environment (EAGLE). This enables **Impact** users to connect their LSAR data directly to publications in **Manager**. The software provides notification of changes

in the logistics data, with updates to S1000D technical documentation. Changes are reviewed for impacts and tracked in a managed process.



Innovative, performance-oriented applications cultivate, organize and disseminate data and technical information assets, supporting the entire S1000D documentation lifecycle.

www.inmedius.com/impact

Key Functions

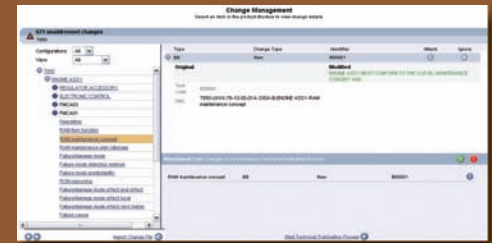
Link, Synchronize LSAR & Technical Publication Data
Create, manage, and control Logistics Source Analysis (LSAR) & S1000D data simultaneously.



Users efficiently create initial Data Modules (DM) and build Requirement Lists (DMRL) for S1000D projects, manage CSDB changes from the logistics source and map technical publishing structures directly to the logistics source.

Track and Manage Changes

Easily identify, make changes when information is updated or altered.



Impact's transparent framework allows seamless data management between engineering and technical publication processes to make changes. The software provides notification of changes in LSA data, and users can track implementation throughout the change process.

Customize Change Management Workflows

Guide changes by configuring processes, setting up automatic email notification to users, and tracking document history through audit trails.



This change management workflow is configured with three steps — Change Analysis, Incorporate Change and Sign-Off.

Benefits

- Improve productivity
- Quickly identify, incorporate changes
- Keep technical content and engineering in sync
- Eliminate duplicate effort
- Streamline internal communications
- Ensure the quality and timeliness of information

Detailed Features

Link, Synchronize LSAR & S1000D Publication Data

Map Technical Publishing Structures to the Logistics Source

Manage and maintain synchronization between LSA source and S1000D documentation.

Build DM Requirements Lists (DMRL) for S1000D Projects

Create DMRLs to collect DMs associated with an equipment hierarchy.

Efficiently Create Baseline Data Modules (DM)

Associate DM codes with LSAR structures, such as logistics task analysis.

Standard Exchange Formats

Use standard data formats for LSAR and S1000D import and export capabilities.

Track and Manage Changes

Manage Changes and Change Status

Review changes for impacts, then implement and track changes in a managed environment. Changes are identified by part number. The Change Form, accessible by all users, describes the incorporated change and allows for tracking status; providing an interface to related information like the LSA and CSDB.

View Detailed Change Information

Review an overview of all change information from one central location.

Change Management Workflows and Reporting

Customize Change Notification and Workflow

Formalize the change process by configuring concise workflows for change review and incorporation.

Audit Trails and Metrics

Information history and status provide audit trails and metric reporting capabilities.

More Information

Visit our website for additional product resources; including screen shots, sample outputs, and demos:

www.inmedius.com/impact

This document is for information purposes only and is subject to change with out notice. Content is current as of June, 2009. Inmedius disclaims all warranties of any kind, either expressed or implied.

Inmedius, the Inmedius logo, the S1000D Publishing Suite, S1000DImpact, and S1000Dmanager are trademarks, and S1000DEverywhere and the S1000DEverywhere logo are service marks of Inmedius, Inc. ASD S1000D and S1000D are trademarks of the Aerospace and Defence Industries Association of Europe. All other company names, products, and marks are the property of their respective holders. Companies do not imply endorsement. SLICwave is a trademark of Integrated Systems, Inc. (ISS). EAGLE (Enhanced Automated Graphical Logistics Environment) is a trademark of Raytheon Company. powerLOG-J is a tool who's sponsor is the U.S. Army Materiel Command (USAMC) Logistics Support Activity (LOGSA). OmegaPS is a trademark of Pennant International Group plc.

Inmedius S1000DImpact Data Sheet © Copyright 2009. Inmedius, Inc. All rights reserved.



Driving operational performance through applications that capture, create, manage and deploy your technical information assets.

Corporate/ USA

Inmedius, Inc.
4900 Perry Highway
Building II, 2nd Floor
Pittsburgh, PA 15229
USA

1-800-697-7110
P: 412-459-0310
F: 412-459-0311

United Kingdom

Inmedius UK
Branksome Place
Hindhead Rd
Haslemere
Surrey
GU27 3PL
UK

P: +44 (0)5601 291 593
F: +44 (0)1428 651 351

Australia

Inmedius Australia Pty Ltd
12 Bergman St
Samford QLD 4520

P: +61 (0) 7 3289 5356
F: +61 (0) 7 3289 5356

India

Inmedius India
KBR Complex
4 Ho Chi Minh Sarani
2nd Floor, 2C
Kolkata WB 700 071
India

System Requirements

The following configuration is a recommended standard configuration. It assumes S1000DImpact is the only Inmedius product installed on the server. It also assumes if Oracle® is the supporting database, Oracle is installed on a separate adequate server. If other Inmedius products and/or Oracle are installed on the same machine, additional hardware may be required.

Server Software

- OS: Windows® (Server 2003, XP Professional), Linux (SuSE Enterprise 10, Open SuSE 11, Ubuntu 6.06+, Red Hat® Enterprise 4+, Fedora Core 7+)
- DB: Oracle 9i or 10g (must be installed before product installation)
- Browser: Internet Explorer 7.0

Server Hardware

- CPU: 2 GHz (dual processor) or 3 GHz (single processor) minimum
- RAM: 2 GB minimum (4 GB recommended)
- Disk Space: 500 MB plus additional space for content to be managed within the database

Client Software

- OS: Windows (2000, XP)
- Browser: Internet Explorer 7.0

Client Hardware

- CPU: 2.5 GHz minimum (dual processor recommended)
- RAM: 1 GB minimum (2 GB recommended)
- Display: 1024x768 minimum (1280x1024 recommended)

Maintenance, Technical Support

Software updates and telephone support are included with annual contracts. Multi-year, multi-license contracts follow a discount price schedule.

Live Web Demo

Rapidly becoming the de facto standard for technical documentation throughout the world, the core ASD S1000D principal of information reuse, or Data Modules (DM), produces information structured in ways that make it deliverable in a wide variety of electronic formats as well as printed manuals.

Schedule an S1000DEverywhere™ online session:

www.inmedius.com/everwhere